

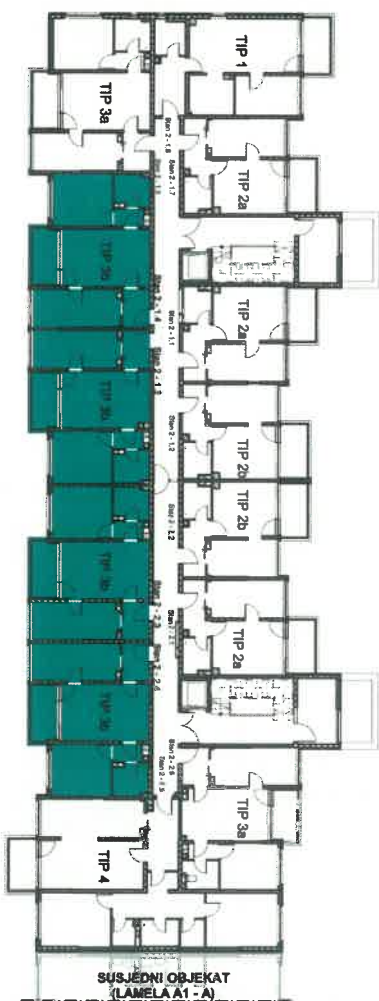
# LAMELA A1-B



## LAMELA A1-B

### POZICIJA STANA NA TIPIČNOJ ETAŽI

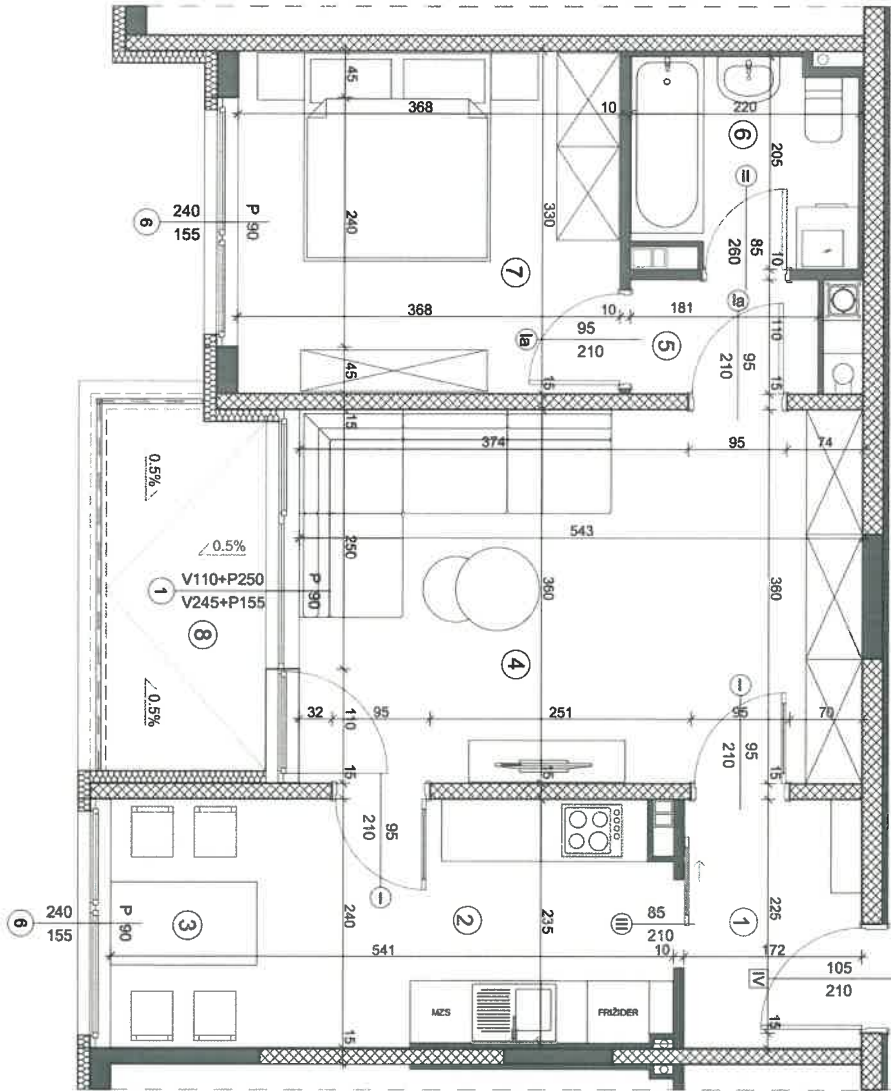
TIP 3b - STAN 1.3: 1.4: 2.3 I 2.4



SUSJEDNI OBJEKAT  
(LAMELA A1 - A)

# STAMBENO - POSLOVNI OBJEKAT U VOGOŠĆI NASELJE ROSULJE

## LAMELA A1-B



### LAMELA A1-B

### TIP 3b- STAN 1.3, 1.4, 2.3 i 2.4 R1: 50

Stan 1.3	Stan 1.4	Stan 2.3	Stan 2.4
Stan P-1.3=59,50m <sup>2</sup>	Stan P-1.4=59,96m <sup>2</sup>	Stan P-2.3=59,82m <sup>2</sup>	Stan P-2.4=59,95m <sup>2</sup>
Stan 1-1.3=59,50m <sup>2</sup>	Stan 1-1.4=59,96m <sup>2</sup>	Stan 1-2.3=59,82m <sup>2</sup>	Stan 1-2.4=59,95m <sup>2</sup>
Stan 2-1.3=59,50m <sup>2</sup>	Stan 2-1.4=59,96m <sup>2</sup>	Stan 2-2.3=59,82m <sup>2</sup>	Stan 2-2.4=59,95m <sup>2</sup>
Stan 3-1.3=59,50m <sup>2</sup>	Stan 3-1.4=59,96m <sup>2</sup>	Stan 3-2.3=59,82m <sup>2</sup>	Stan 3-2.4=59,95m <sup>2</sup>
Stan 4-1.3=59,38m <sup>2</sup>	Stan 4-1.4=59,84m <sup>2</sup>	Stan 4-2.3=59,70m <sup>2</sup>	Stan 4-2.4=59,83m <sup>2</sup>
Stan 5-1.3=59,38m <sup>2</sup>	Stan 5-1.4=59,84m <sup>2</sup>	Stan 5-2.3=59,70m <sup>2</sup>	Stan 5-2.4=59,83m <sup>2</sup>
Stan 6-1.3=59,38m <sup>2</sup>	Stan 6-1.4=59,84m <sup>2</sup>	Stan 6-2.3=59,70m <sup>2</sup>	Stan 6-2.4=59,83m <sup>2</sup>

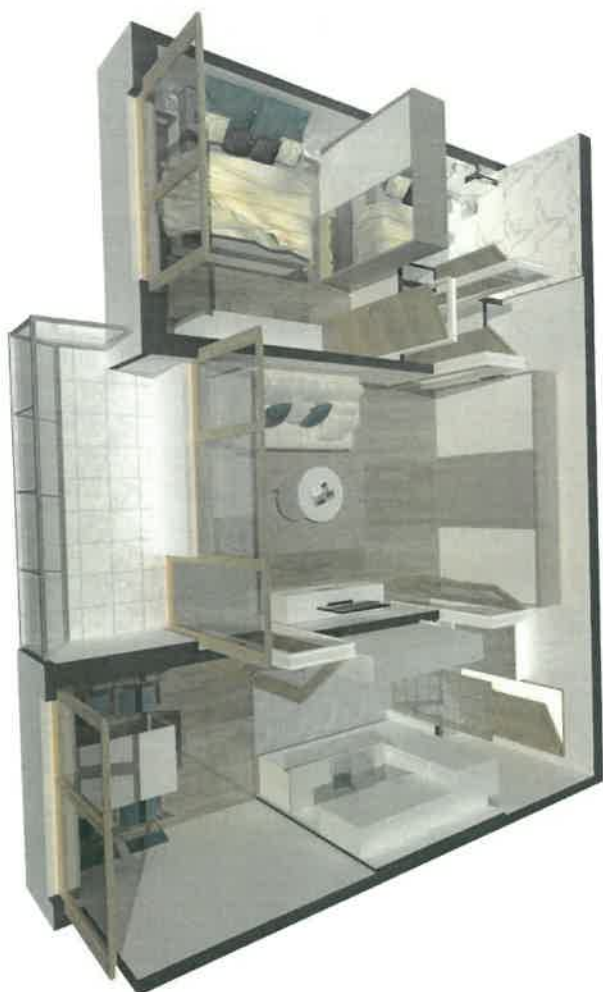
STANJE 1.3.3				STANJE 1.3.4			
1	2	3	4	1	2	3	4
HODNIK	3,00	3,00	3,00	3,00	3,00	3,00	3,00
KUHINJA	5,80	5,80	5,80	5,80	5,80	5,80	5,80
TRPIZARIJA	7,20	7,20	7,20	7,20	7,20	7,20	7,20
DNEVNA SOBA	18,20	18,20	18,20	18,20	18,20	18,20	18,20
DRUGA SOBA	9,80	9,80	9,80	9,80	9,80	9,80	9,80
KUPATILIC	4,20	4,20	4,20	4,20	4,20	4,20	4,20
SPAVNA SOBA	12,20	12,20	12,20	12,20	12,20	12,20	12,20
TERASA	3,20	3,20	3,20	3,20	3,20	3,20	3,20
UKUPNO				UKUPNO			
39,80				39,80			

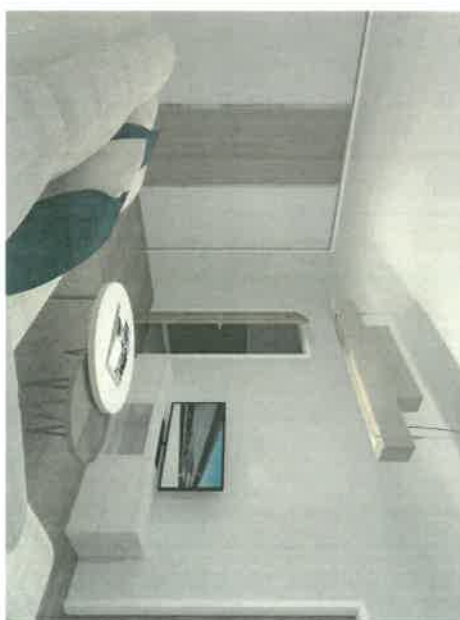
STANJE 1.3.3				STANJE 1.3.4			
1	2	3	4	1	2	3	4
HODNIK	3,00	3,00	3,00	3,00	3,00	3,00	3,00
KUHINJA	5,80	5,80	5,80	5,80	5,80	5,80	5,80
TRPIZARIJA	7,20	7,20	7,20	7,20	7,20	7,20	7,20
DNEVNA SOBA	18,20	18,20	18,20	18,20	18,20	18,20	18,20
DRUGA SOBA	9,80	9,80	9,80	9,80	9,80	9,80	9,80
KUPATILIC	4,20	4,20	4,20	4,20	4,20	4,20	4,20
SPAVNA SOBA	12,20	12,20	12,20	12,20	12,20	12,20	12,20
TERASA	3,20	3,20	3,20	3,20	3,20	3,20	3,20
UKUPNO				UKUPNO			
39,80				39,80			

STAMBENO - POSLOVNI OBJEKAT U VOGOŠĆI NASELJE ROSULJE

## LAMELA A1-B



**3D PRIKAZ STANA**  
**TIP 3b- STAN 1.3: 1.4: 2.3 | 2.4**



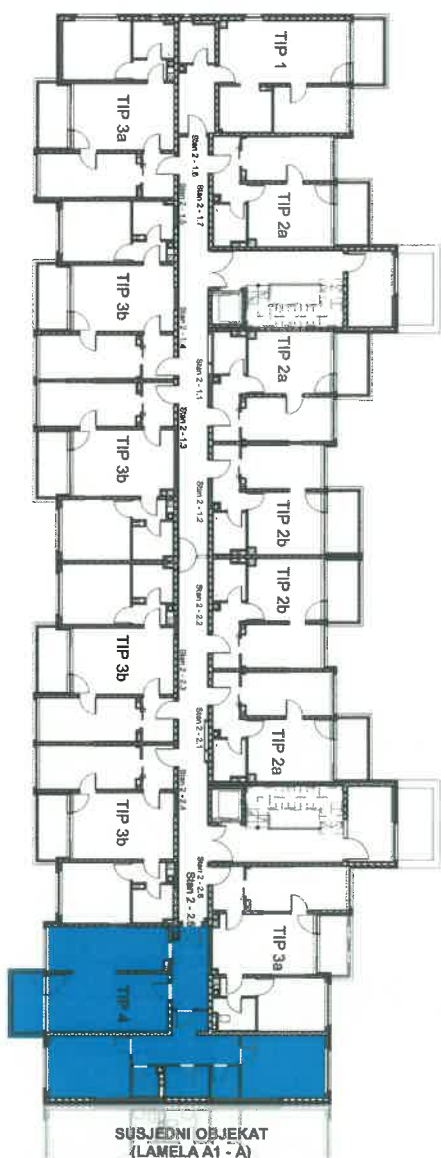
# STAMBENO - POSLOVNI OBJEKAT U VOGOŠĆI NASELJE ROSULJE

## LAMELA A1-B



### LAMELA A1-B

POZICIJA STANA NA TIPAČNOJ ETAŽI TIP 4 - STAN 2.5





STAMBENO - POSLOVNI OBJEKAT U VOGOŠĆI NASELJE ROSULJE

## LAMELA A1-B

3D PRIKAZ STANA  
TIP 4 - STAN 2.5

